

# SERVICE



# LETTER

Service Letter No. 345

September 14, 1960

TO: Distributors, Dealers, Certified Service Centers and Owners

SUBJECT: Hartzell Service Bulletin No. 75 - Inspection of Hartzell Governor for Presence of Vent Hole

MODELS AFFECTED: PA-23-250 Aztecs and  
PA-24-250 Comanches - Equipped with Hartzell Model B4 Governors

Attached to this Service Letter is a copy of the subject Bulletin which is submitted for your information and appropriate action. The reverse side of this Bulletin indicates, in the B4 column, the serial numbers of the governors affected. In addition, the following aircraft serial numbers indicate those aircraft which were inspected prior to delivery and which are not affected by Hartzell Bulletin No. 75:

PA-23-250 AZTECS: Serial Nos. 27-246, 27-253, 27-259, 27-262 through 27-272, 27-274, 27-275, 27-277, 27-279 and up.

PA-24-250 COMANCHES: Serial Nos. 24-1898, 24-1937, 24-2003, 24-2016, 24-2038, 24-2061, 24-2088, 24-2099, 24-2133, 24-2144, 24-2151, 24-2154, 24-2161, 24-2165, 24-2197, 24-2201, 24-2210, 24-2211, 24-2221, 24-2225 and up.

Very truly yours,

PIPER AIRCRAFT CORPORATION

WH:G  
Enclosure

A handwritten signature in cursive script that reads "Wes Holmes".  
Wes Holmes  
Service Manager

PIPER AIRCRAFT CORPORATION, LOCK HAVEN, PA., U. S. A.

HARTZELL PROPELLER, INC.  
PIQUA, OHIO

BULLETIN NO. 75

"FAA APPROVED"

August 5, 1960

UBJECT: Inspection of Hartzell Governor for Presence of Vent Hole

EFFECTIVITY: See (Page 2)

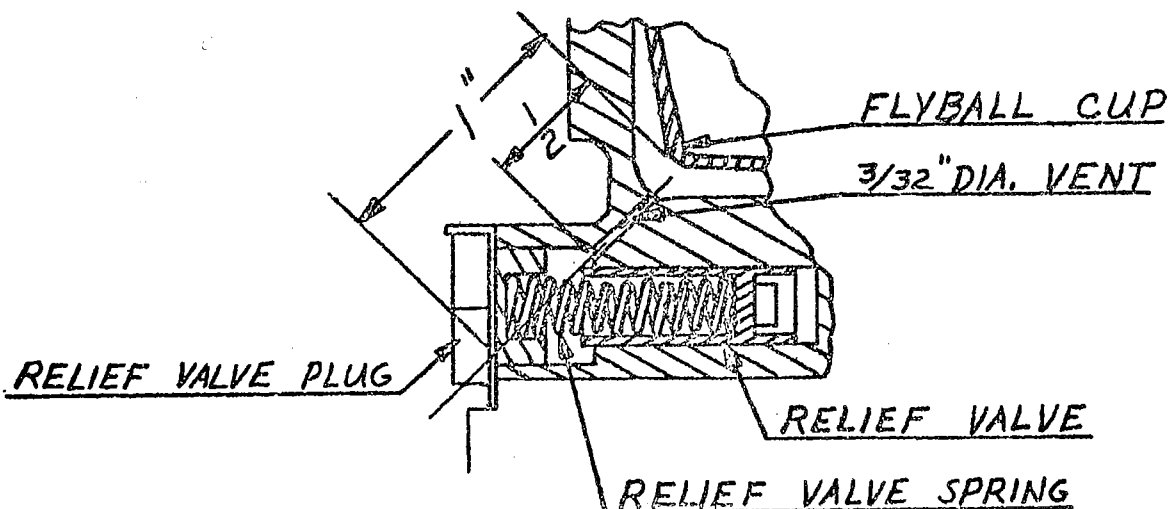
DISCUSSION: There have been several instances reported wherein excessive governor pressure ruptured the piston of the propeller. In every instance, this occurred during engine run up, when the oil was relatively cold and thick. Investigation of the Hamilton-Standard governor, modified to Hartzell specifications, revealed that a vent hole in the governor body was missing or plugged. This vent hole, which connects the spring side of the relief valve cavity with the flyball housing, prevents oil from locking the relief valve in the closed position. Governor bodies of certain model Hamilton-Standard governors do not have this vent present.

INSPECTION REQUIRED: Inspect the governor for presence of open vent hole:

1. Remove relief valve plug cap and spring, on side of governor.
2. Check visually for presence of open vent hole, as shown on sketch below:
  - (a) If vent hole is not present, drill one as described below.
  - (b) If vent hole is present, check to be sure it is open to the flyball housing. Use length of safety wire and insert it into the hole for the distance shown if possible. If vent is plugged, the wire cannot be inserted the full distance.
3. If vent hole is absent or plugged:
  - (a) Remove governor from engine
  - (b) Remove governor cap
  - (c) Remove plug, or drill vent as shown.

CAUTION!! Great care must be taken to insure that chips do not enter governor passages. Clean thoroughly.

4. Reassemble governor and reinstall on airplane.



EFFECTIVITY: (Continued from Page 1)

Model	Effective on all governors with serial numbers as stated below	Exceptions: (These have been checked at Hartzell plant)
B-2	23D(All numbers below this serial number are affected)	12DN, 14DN, 16DN, 17DN, 18DN, 19DN, 20DN, 21DN
	800N to 934N	857N, 858N, 885N, 887N, 919N, 916N, 936N
	876 to 946	879, 885, 886, 888, 894, 895, 904, 905, 907, 914, 916, 910, 922, 926, 928, 941, 945
B-3	N900 to N956	N928, N930, N932, N934, N938, N943, N949, N954
	976 to 1123	1019, 1028, 1030, 1115
B-4	1816F(All numbers below this serial number are affected)	1264F, 1442F, 1454F, 1496F, 1542F, 1560F, 1570F, 1571F, 1588F, 1722F, 1725F, 1730F, 1731F, 1732F, 1733F, 1750F, 1751F, 1754F, 1756F, 1771F, 1779F, 1780F, 1781F, 1793F, 1794F, 1802F, 1807F, 1808F
B-4-1	276F(All numbers below this serial number are affected)	---
B-4-2	1375F(All numbers below this serial number are affected)	1330F, 1331F, 1334F, 1339F, 1340F, 1347F, 1348F, 1349F, 1350F, 1352F, 1354F, 1355F, 1357F, 1359F, 1362F, 1365F, 1366F, 1368F, 1369F, 1372F, 1373F, 1376F, 1353F, 1371F
B-4-3	1716F(All numbers below this serial number are affected)	696F, 1594F, 1627F, 1630F, 1636F, 1638F, 1647F, 1653F, 1654F, 1657F, 1658F, 1661F, 1662F, 1663F, 1665F, 1666F, 1668F, 1669F, 1675F, 1676F, 1677F, 1680F, 1681F, 1685F, 1688F, 1690F, 1691F, 1692F, 1693F, 1697F, 1699F, 1701F, 1702F, 1703F, 1704F, 1705F, 1707F, 1708F, 1709F, 1710F, 1712F, 1713F, 1714F, 1715F, 1716F